


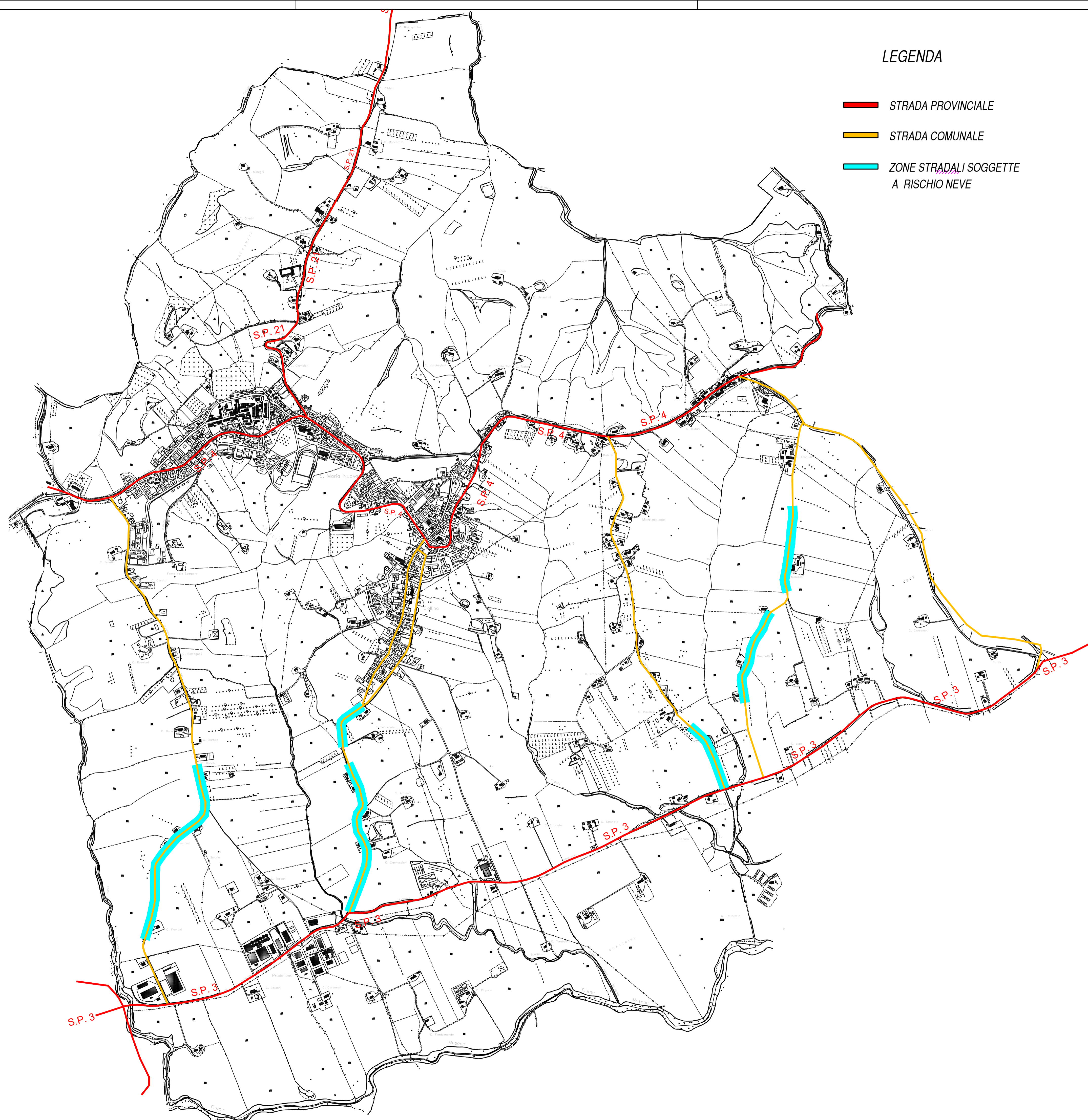


LEGENDA

-  STRADA PROVINCIALE
-  STRADA COMUNALE
-  ZONE STRADALI SOGGETTE A RISCHIO NEVE



COMUNE DI S.MARIA NUOVA  
PROVINCIA DI ANCONA



PIANO EMERGENZA COMUNALE

Anno 2023

Data Red.: LUGLIO 23

TAVOLA  
**E05**

**RISCHIO NEVE**

SCALA

1:10000

SINDACO  
Alfredo CESARINI

TECNICO  
Geol. Daniele Stronati

COLLABORATORE  
Geol. Margherita Rocchetti

UFFICIO TECNICO

Ing. Fabrizio PETRONI

Geom. Cristian OSIMANI

Geom. Fabiola BIANCHI